

## Litezupp - Headlamp Installation

Shown on a Triumph TR250, but very similar to many classic vehicles.

Remove chrome beauty rings by slightly prying out and popping off.



The headlamp is held in place by a captive ring with 3 screws.

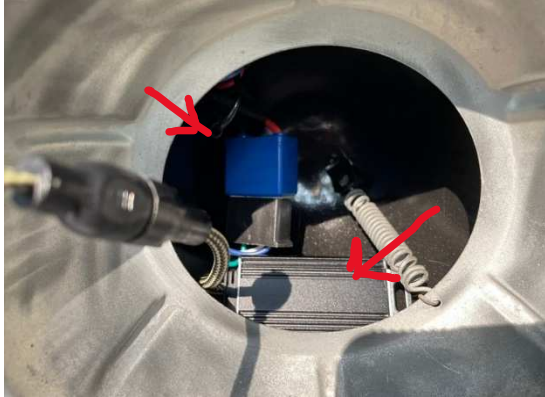
Recommend removing the two most upper screws and slightly bending ring out.



Pull bulb out slightly and disconnect 3 pin electrical plug.

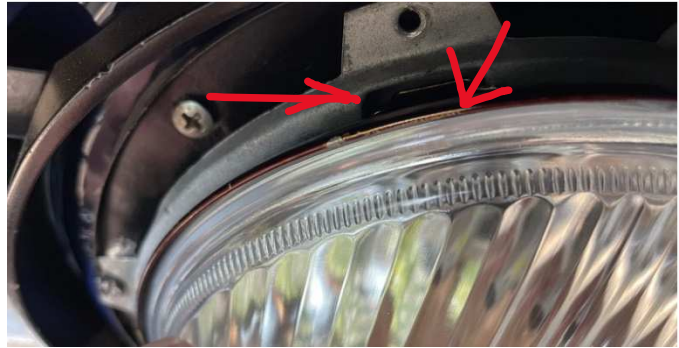
Note that there are three mounting tabs on the back of the headlamp that fit into the mounting slots on the headlamp bucket. There is a top and bottom to the headlamp and the bulbs should only fit one way. Also, TOP is noted on the front of the headlamp.





To install new LED headlamps, take the whole assembly and connect the electrical plug. The plug/socket and driver unit should be positioned around the back bottom/side of headlamp bucket.

Ensure tabs on headlamp are aligned with the bucket slots, then slip captive ring back over and install the screws that were taken out before.



Note: If after installing the captive ring the headlamp is loose, we recommend adding tape or a small piece of gasket material between the ring and the bulb so that when the captive ring is tightened, the bulb is snug. NOTE: DO NOT OVERTIGHTEN.

At this time, it is good to check that headlamps are working on low and high beams.

Follow the alignment instructions that were sent with the headlamps or go on line to [www.litezupp.com](http://www.litezupp.com), click on left side click on "Data Sheets and Apps" and you will find a Headlight adjustment .pdf file.

Reinstall the chrome beauty rings and you will be set. Note the bottom catch on bucket and tab on the ring to hold in place.

